



# Multiple scales for nature conservation in sustainable forest management: integration and segregation

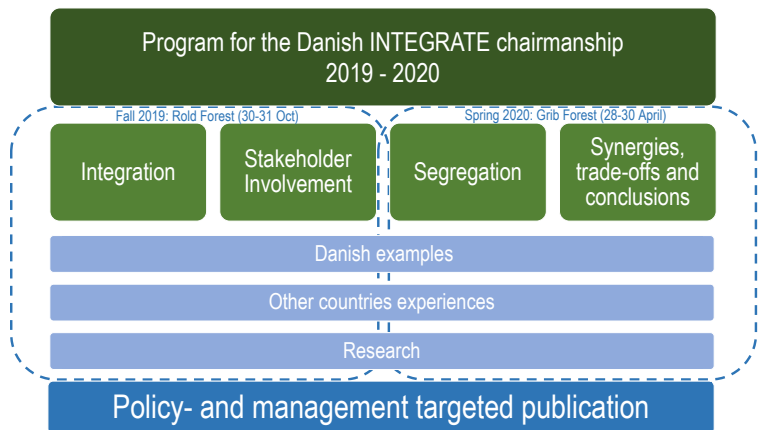
**First event:** Integrating Nature Conservation and Involving People in SFM  
30 – 31 October 2019 . Rold Forest, Denmark

Changing societal demands and a changing climate are putting new pressure to find the right balance between the resources and services our forests can provide.

While our first event will focus on integration, the second event will focus on segregation and will put both into perspective. We look forward to having insightful discussions with you!

Drawing on the Danish examples of close-to-nature forest management and set-aside forests, and putting it into perspective with experiences from other European countries, we want to elaborate on the following questions:

- **How is biodiversity conservation addressed in forest policy and management with regards to the interplay of integration and segregation?**
- **How are society and experts involved in planning and implementation of forest management?**
- **What lessons can be learnt across countries in Europe?**



For registration and further information go to <https://bit.ly/2ZHMS5H> (deadline 1 October 2019)  
Contact: Mogens Krog <mokro@nst.dk>

