

Technical information

Name: **Premol**

PBI: **28**

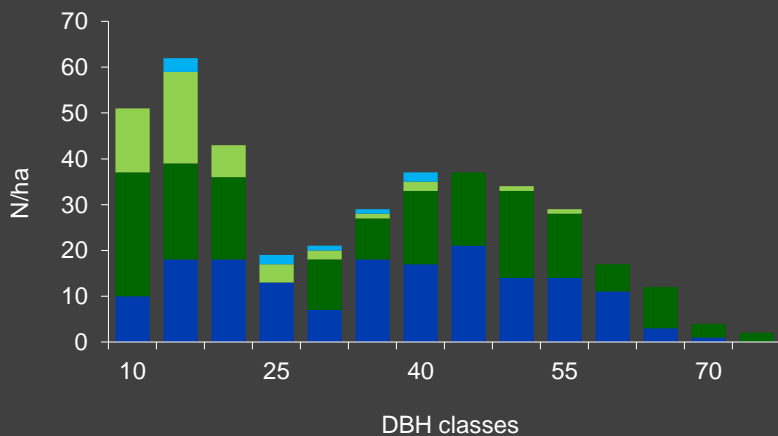
Forest type: **Spruce-Fir**

FR

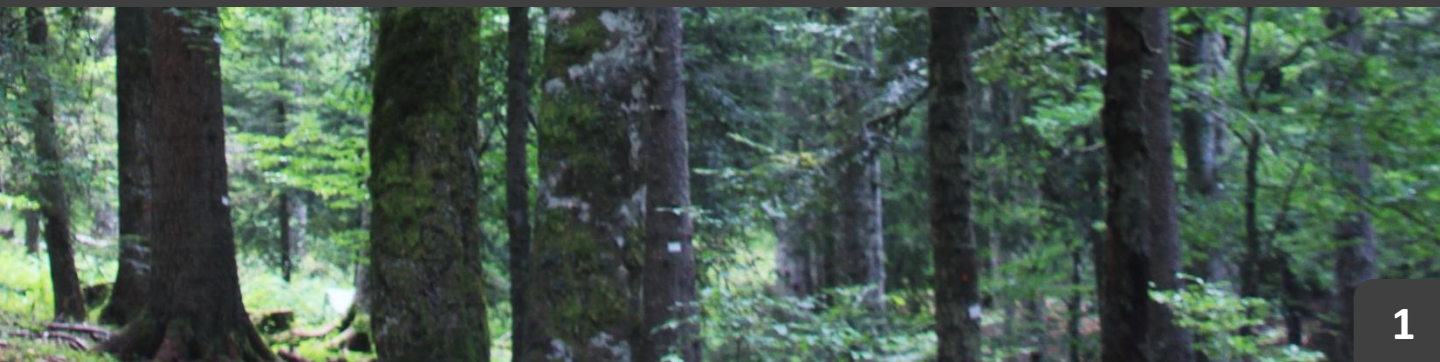
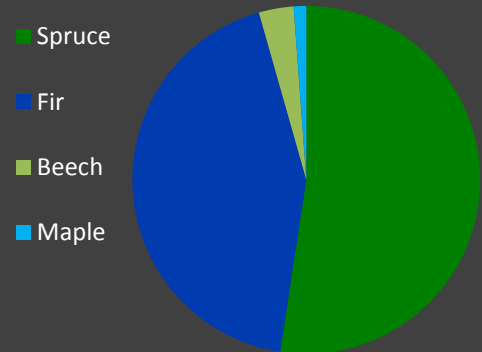
Topic: Positive selection of elite trees, retention of habitat trees

State/ Region	Owner	Year of establishment	Size
Isère	State	2015	0.8 ha
Altitude [m.a.s.l.]	Mean annual precipitation [mm]	Mean annual temperature [°C]	Natural forest community
1 500	1200	5.7	Vaccinio-Piceetum
Number of trees [N/ha]	Basal area [m ² /ha]	Volume [m ³ /ha]	Habitat value [points]
509	55.2	571.5	6 661

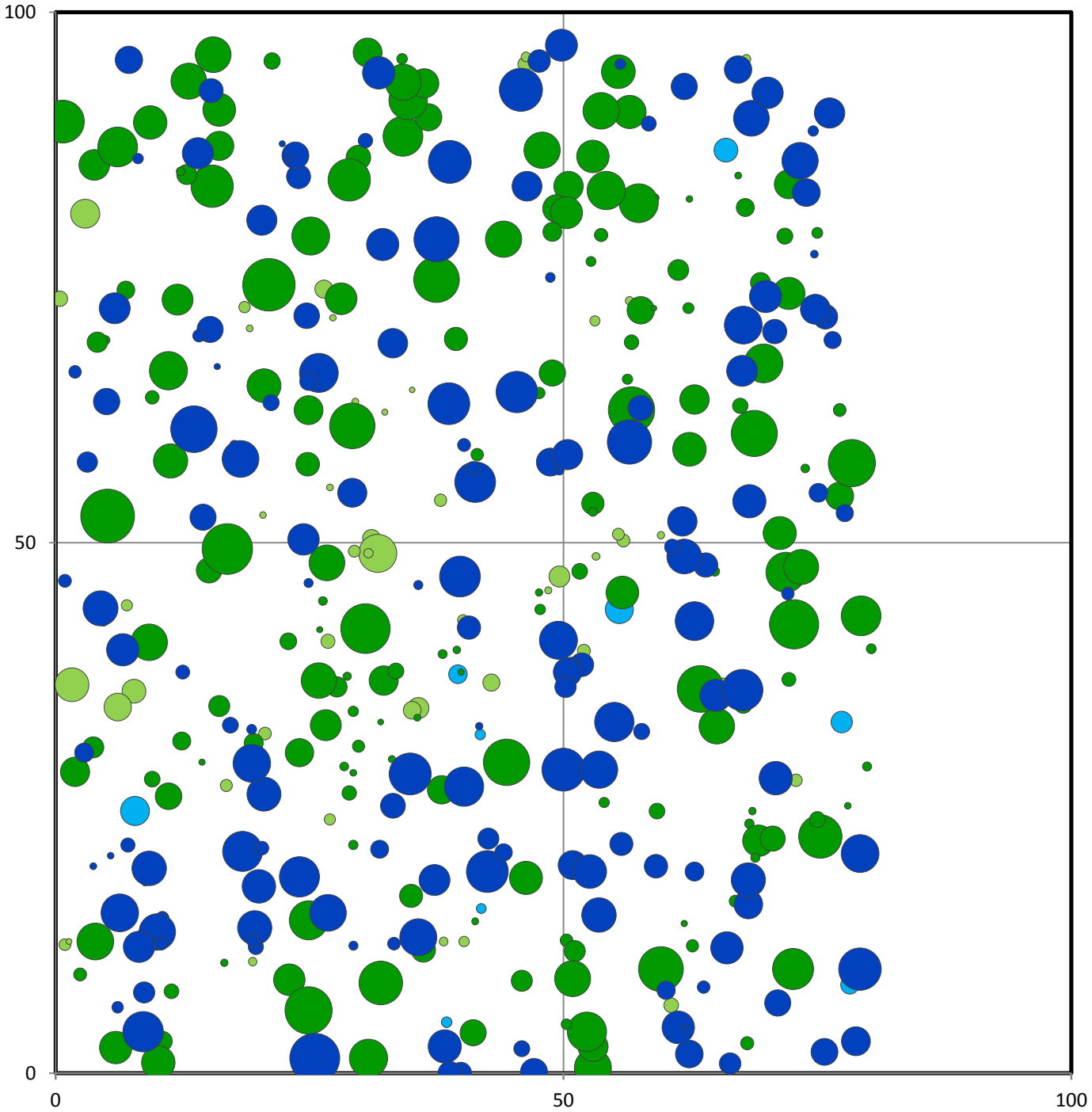
DBH distribution



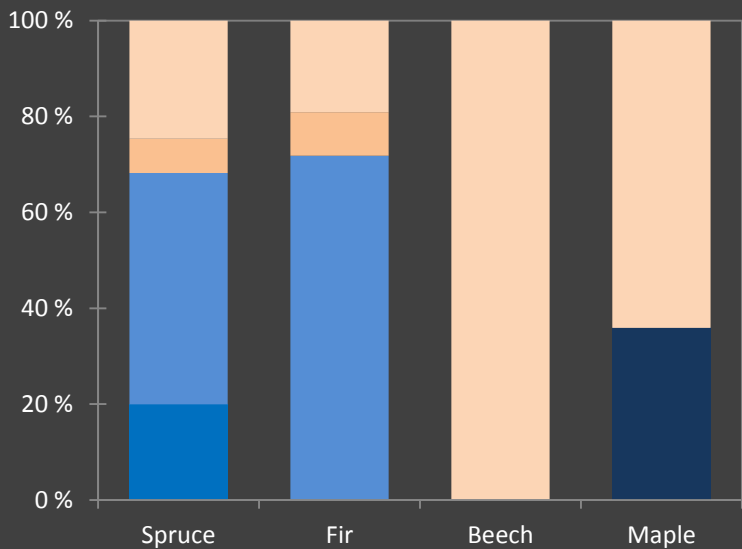
Tree species distribution [% Volume]



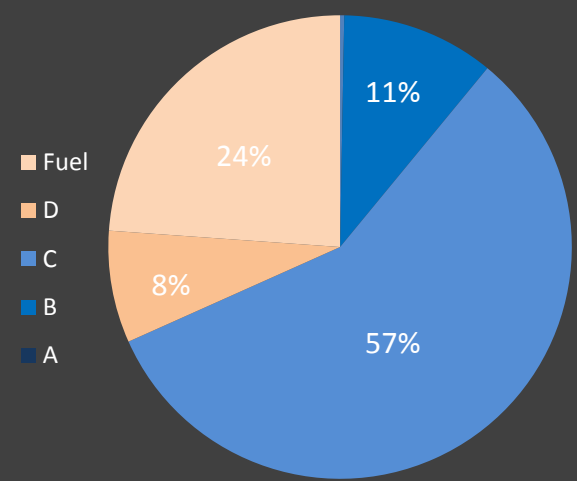
Marteloscope map:



Tree species	N [#]	N/ha [#]	BA [m ²]	BA/ha [m ²]	V [m ³]	V/ha [m ³]
Spruce	181	226	21.9	27.4	244.3	305.4
Fir	165	206	19.9	28.8	200.9	251.2
Beech	52	65	1.8	2.3	8.2	10.2
Maple	9	11	0.6	0.7	3.7	4.6
Total	407	509	44.2	55.2	457.2	571.5

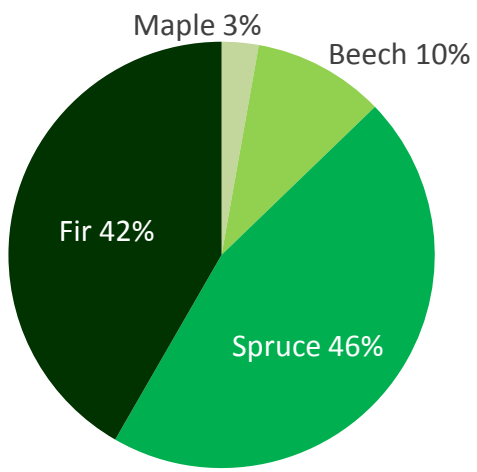


Timber quality

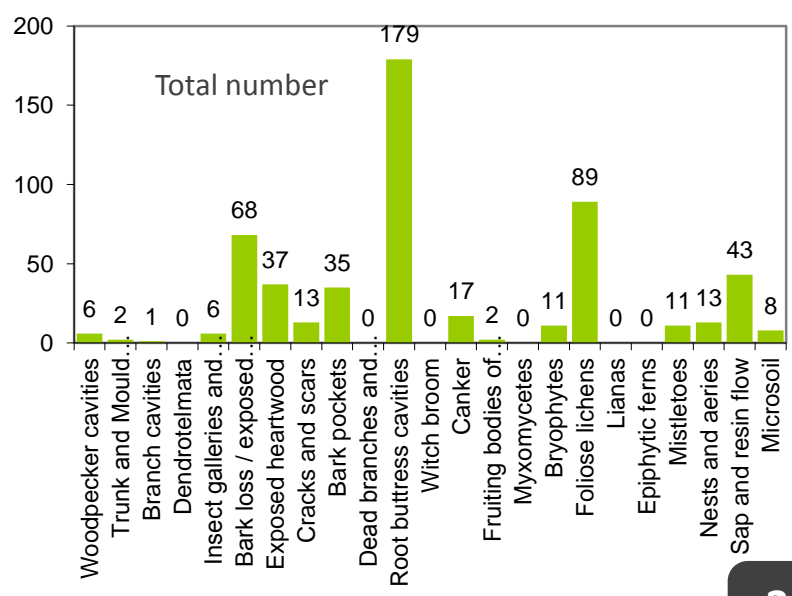


Total stand

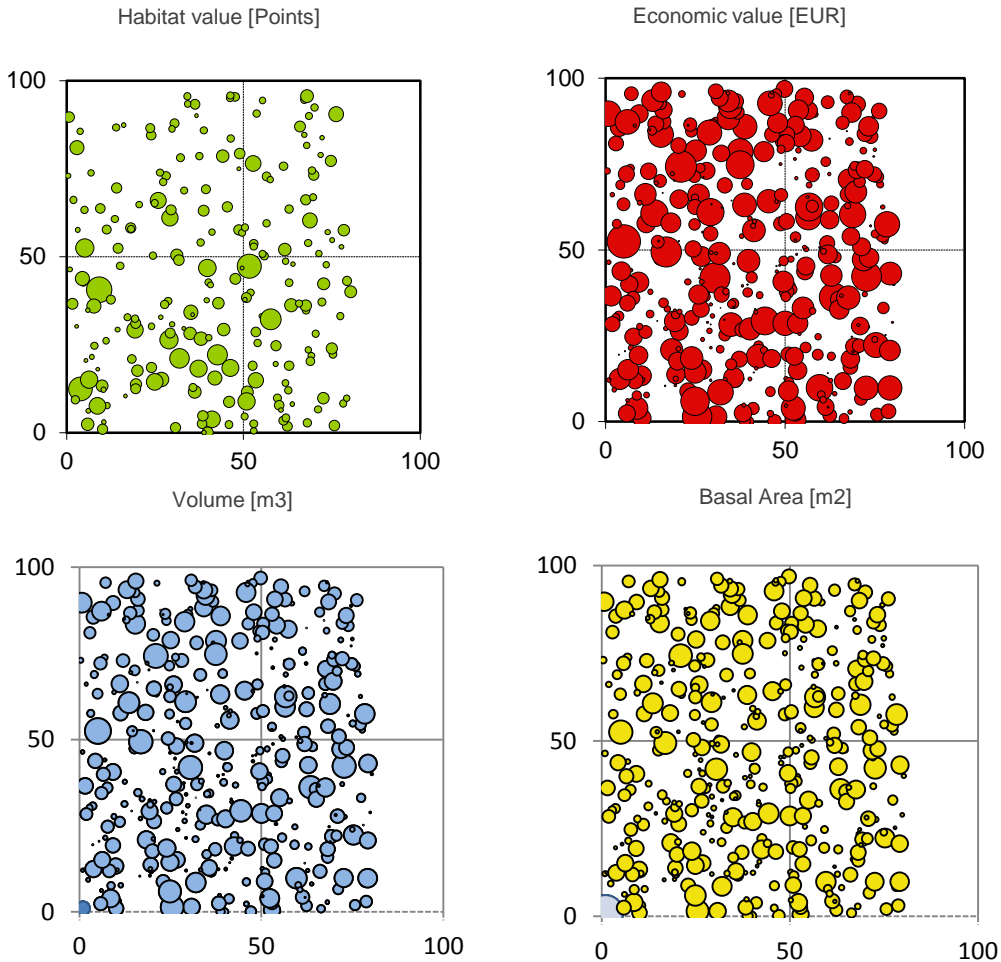
Microhabitats



per tree species



Thematic maps:



Contact:

Marc Fuhr
Irstea - Ecosystèmes Montagnards
Domaine universitaire 2 rue de la
Papeterie – BP 76
38 402 Saint-Martin-d'Hères

Tel: +33 4 76 76 27 28
info@irstea.fr

More information:

Daniel Kraus
European Forest Institute
Wonnhaldestr. 4
D-79100 Freiburg

www.integrateplus.org
info@integrateplus.org